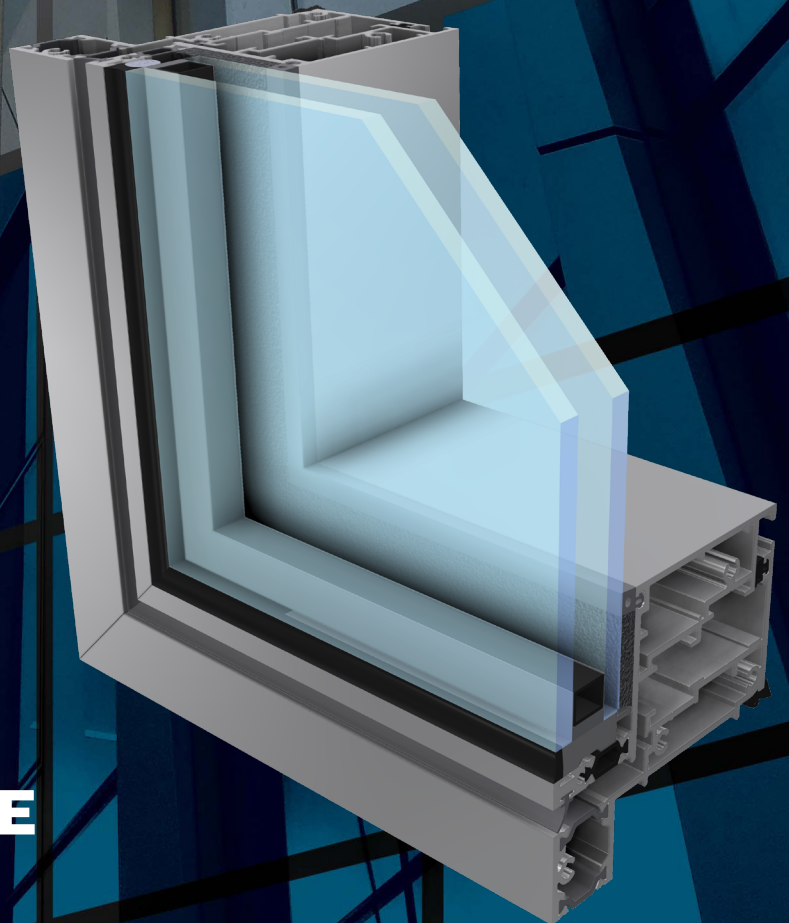




Optivü

**HPGV
VENTED WINDOW PRODUCTS**



**HIGH PERFORMANCE
HIGH QUALITY**

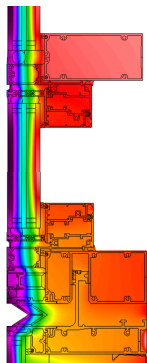


OptiVü

Engineered for High Performance

OPTIVÜ VENTED GLASS

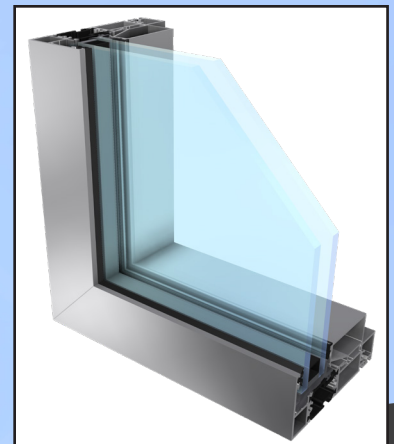
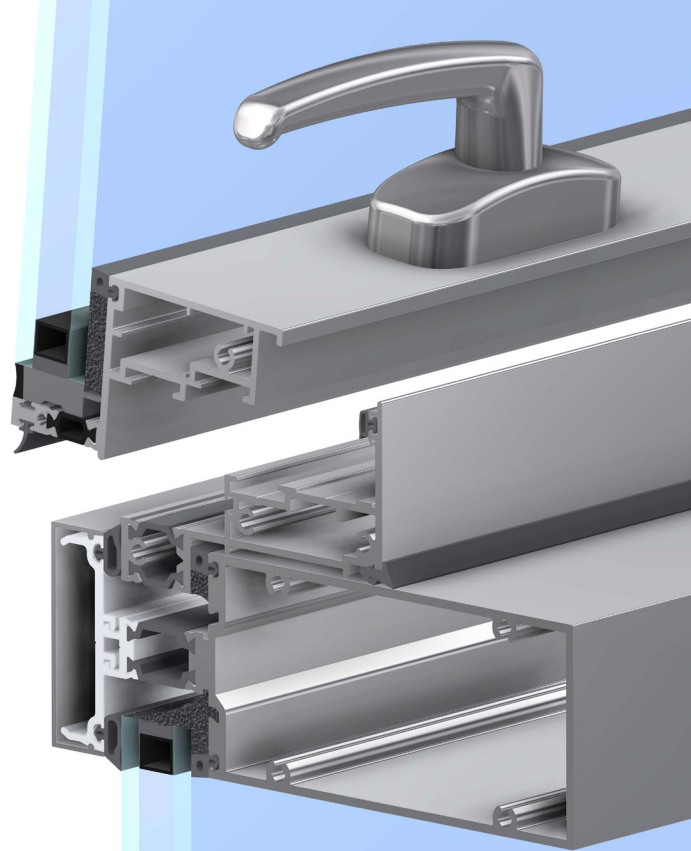
- Accommodates Double 25mm (1") and Triple 44mm (1-3/4") glazing.
- Available in both Awning and Casement configurations.
- Design for use in Flynn's OptiVu-FW100 (Fixed window) and Flynn 6450HP Unitized Curtain Wall
- Utilizes 300 series stainless steel screws for maximum corrosion protection.
- Structural silicone glazed with complete perimeter trim for enhanced glass edge protection.
- Features silicone gaskets to increase the lifespan of the building envelope.
- Rolled polyamide thermal breaks for improved thermal performance.
- Available in separate interior and exterior finishes.
- Frame Depth: 95mm (3-3/4").
- Multipoint locking hardware
- North American hardware by Caldwell Manufacturing.
- Optional magnetic Fly-screen



Triple Glazed



Double Glazed



**FIXED WINDOW PRODUCTS
ALSO AVAILABLE**

OptiVü has been tested and complies with AAMA/WDMA/CSA 101/I.S.2/A440 (NAFS).

Performance Class and Grade:
AW-PG90-AP/AW-PG90-C

- Air infiltration / Exfiltration by static pressure (ASTM E283) - Air infiltration rate shall not exceed 0.10 cfm/ft² at a static air pressure differential of 6.24 psf (300 Pa). A3 rating when n tested in accordance with CAN/CSA440-00 Windows.
- WATER INFILTRATION BY STATIC PRESSURE (ASTM E331) - When subject to water spray at the rate of five gallons per hour per square foot and static pressure of 718 Pa (15 PSF) for 15 minutes. Meets the B7 rating with no water leakage at 15 psf (720 Pa) when tested in accordance with CAN/CSA-A440-00 Windows.
- Uniform Load Deflection: A minimum static air pressure difference of 90 psf (4309 Pa) shall be applied in the positive and negative direction in accordance with ASTM E330. meets a C5 rating when tested in accordance with CAN/CSA-A440-00 Windows
- Window Components: Window components shall be tested in accordance with procedures described in AAMA/WDMA/CSA 101/I.S.2/A440 and AAMA 910.
- Acoustic performance ASTM E90 (E413 STC, E1332 OITC)
- Forced entry ASTM F588, Grade 10
- Thermal: NFRC 102, AAMA 1503, and CSA A440.2



NORTHERNFACADES.COM

22038-1-220609