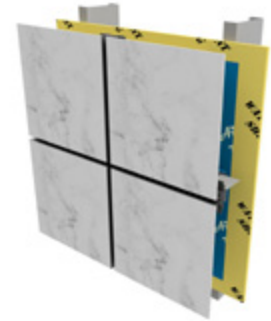


TECHNICAL INFORMATION

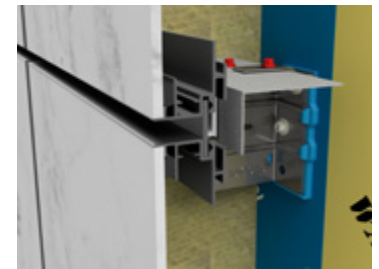
MATERIAL: LAMINAM CERAMIC SLAB

Made from a blend of fine-grain clays and other minerals to produce a very dense body, which makes ceramic highly resistant to moisture, staining and wear. It will withstand years of heavy weathering in exterior façade applications while maintaining its color and beauty. A rain screen system for non-combustible construction.



SYSTEM

Custom made Laminam sintered ceramic tile faced, modular wall and soffit panel system. System uses a rear ventilated dry joint, rain screen construction.



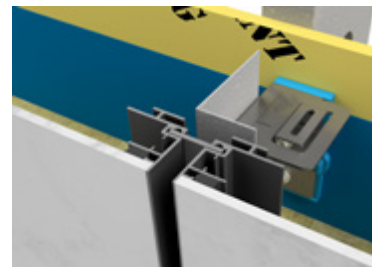
OPTIONS

Available plank sizes:

Laminam 3+ (3.5mm) is available in 1000mm x 3000mm slab size.

Laminam 5 (5.6mm) is available in 1000mm x 3000mm and 1620mm x 3240mm.

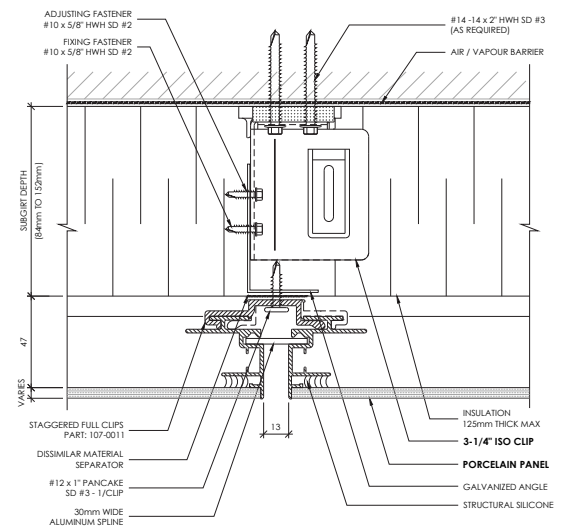
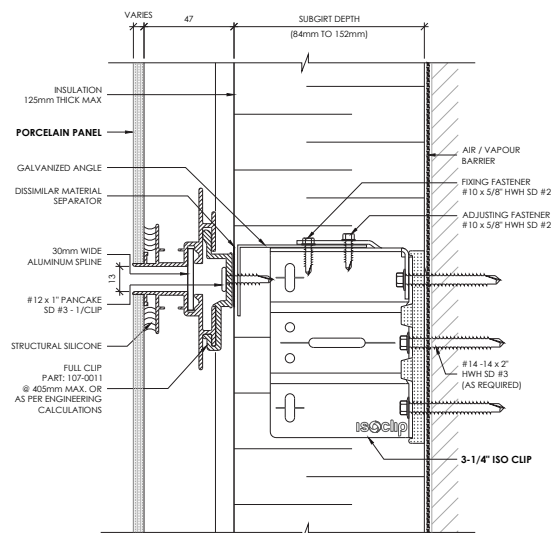
Exposed STX panel extrusions black anodized as standard or painted with a PPG/ Durnar color or anodized to compliment ceramic tile.



Prefabricated mitered tile corners are available.

Horizontal joint

Vertical joint



STX With Protected Edge Shown

STX

CERAMIC ARCHITECTURAL PANELS

KEY FEATURES

- Rain screen system (DBVR) (PER)
- Excellent anti-graffiti properties
- Thin, light-weight slabs
- Install on multiple substrates
- Suitable for high rise construction
- Resistant to extreme frost and UV rays
- Scratch, dent, and abrasion resistant
- Wide range of high quality finishes and texture options available
- Non-combustible
- Quick installation
- Building code compliant

AVAILABILITY & PRICING

- Through approved façade and cladding contractors throughout North America
- Fabricated by Northern Facades Ltd. In a state-of-the-art production facility in Ontario, Canada
- Project estimating, engineering, design assistance and 3 D laser scanning service available
- Optimum price point cassette panel dimension 1000mm x 3000mm
- Average material lead time eight weeks

BENEFITS

- Large format sintered ceramic material
- 130+ colors to choose from
- SB10, ASHRAE 90.1 compliance through integration of a thermally insulated sub-girt ISO clip system
- Bonded fiberglass mesh backing comes standard with STX system to keep material in place in the unlikely event of breakage

TEST REFERENCES

AAMA 501.1 – Standard Test Method for Water Penetration of Windows, Curtain Wall and Doors Using Dynamic Pressure

AAMA 508-09 – Voluntary Test Method and Specification for Pressure Equalized Rain Screen Wall Cladding System

AAMA 509-14 – Voluntary Test and Classification Method for Drained and Back Ventilated Rain Screen Wall Cladding Systems

ASTM E283-04(2012) – Standard Test Method for Determining Rate of Air Leakage Through Exterior Windows, Curtain Walls, and Doors Under Specified Pressure Difference Across the Specimen

ASTM E330/E330M-14 – Standard Test Method for Structural Performance of Exterior Windows, Doors, Skylights and Curtain Walls by Uniform Static Air Pressure Difference

ASTM E331-00(2016) – Standard Test Method for Water Penetration of Exterior Windows, Skylights, Doors, and Curtain Walls by Uniform Static Air Pressure Difference

ULC-S135-04 - Standard Test Method for the Determination of Combustibility Parameters of Building Materials Using an Oxygen Consumption Calorimeter (Cone Calorimeter)



Northern Facades Ltd.
6451 Northwest Drive
Mississauga, ON L4V 1K2
Canada

1-844-740-2050
info@northernfacades.com

NorthernFacades.com