

# AXIOM

METAL PLATE ARCHITECTURAL PANELS

## TECHNICAL INFORMATION

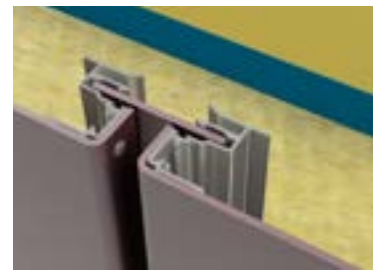
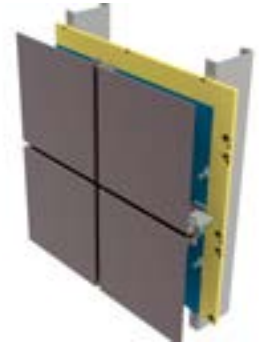
### MATERIAL

AXIOM panels are fabricated from tension-leveled, architectural grade aluminum plate, complete with shop installed stiffening ribs (if required). Panel corners are typically press formed on 1/8" (3mm) thick panels to provide a seamless finish and post painted. 2mm prepainted panel corners are mitred and provide a sharper return edge.

The 3mm aluminum panels are factory painted, in a controlled environment, which allows for limitless applications and the ultimate in design flexibility. 2mm prepainted panels are also available as well as other non-ferrous materials such as zinc and stainless steel.

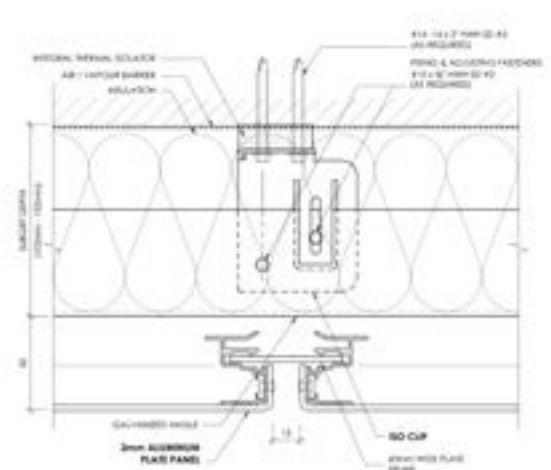
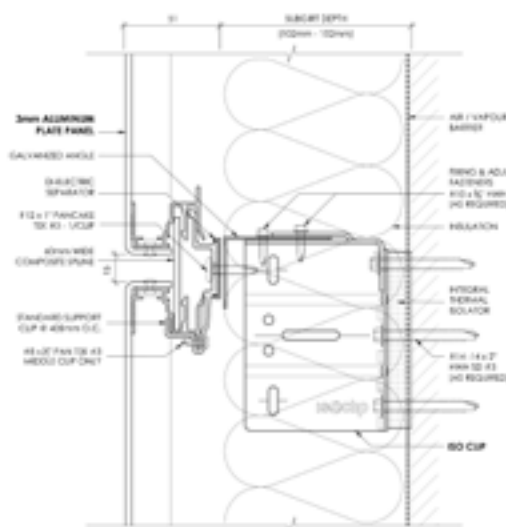
### SYSTEM

AXIOM is a solid metal plate wall system uniquely designed and tested as a pressure equalized rainscreen. The Axiom System meets all of the requirements of the latest edition of the National Building Code for non-combustible construction and is considered a true dry-joint system. When codes prevent the use of composite panel, Axiom is the choice of leading architects.



Horizontal joint

Vertical joint



# AXIOM

METAL PLATE ARCHITECTURAL PANELS

## BENEFITS

- Designed for thermal expansion and contraction
- Limitless design flexibility including curves and corners
- Available 2mm pre-finished or 3mm post-painted
- SB10, ASHRAE 90.1 compliant with inclusion of ISO Clip
- Non-combustible
- Pressure equalized rainscreen
- Variety of colours and finishes

## AVAILABILITY & PRICING

- Through approved facade and cladding contractors throughout North America
- Fabricated by Northern Facades in Ontario, Canada
- Project estimating and design assistance available
- Project-specific pricing
- Average material lead time 5-6 weeks

## PANEL SIZING

The AXIOM series is available in standard panel widths up to a maximum of 60" and length up to a maximum of 144". The standard and most cost effective panel modules are 20ft<sup>2</sup>-25ft<sup>2</sup> in area. Larger size panels can be accommodated, with maximum dimensions of 72" wide by 168" in length, please note additional labour and material costs are associated with larger size panels.

The system has a depth of 2" nominal with horizontal and vertical joints both nominally 0.6" for 3mm and 0.7" for 2mm.

## PERFORMANCE

AAMA 508-07 - Voluntary Test Method and Specification for Pressure-Equalized Rain Screen Wall Cladding Systems

ASTM A792/A792M Standard Specification for steel Sheet. 55% Aluminum-Zinc Alloy-Coated by the Hot Dip Process

ASTM E283-04(12) - Standard Test Method for Determining Rate of Air Leakage Through Exterior Windows, Curtain Walls, and Doors Under Specified Pressure Differences Across the Specimen

ASTM E330/E330M-14 - Standard Test Method for Structural Performance of Exterior Windows, Doors, Skylights and Curtain Walls by Uniform Static Air Pressure Difference

ASTM E331-00(09) - Standard Test Method for Water Penetration of Exterior Windows, Skylights, Doors, and Curtain Walls by Uniform Static Air Pressure Difference



Joseph Brant Hospital, Toronto, Canada



Northern Facades Ltd.  
6451 Northwest Drive  
Mississauga, ON L4V 1K2  
Canada

1-844-740-2050  
info@northernfacades.com

[NorthernFacades.com](http://NorthernFacades.com)